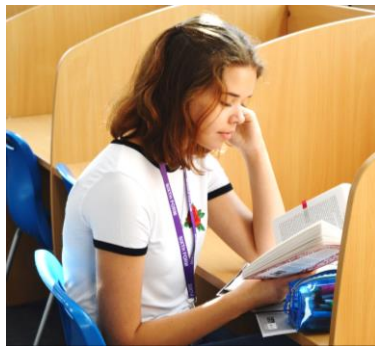


**Share • Care • Believe • Achieve**



**CHILWELL  
SCHOOL  
6TH FORM**

**Prospectus 2019-20**



# Welcome to Chilwell School 6<sup>th</sup> Form

At Chilwell School Sixth Form, we deliver high quality education to all of our students, enabling them to maximize their potential and realise their goals. The aim of post 16 education is to provide opportunities for students to gain the best possible qualifications and to prepare them so that they can successfully progress onto the next stage of their career, whether in higher education, further training or employment. At Chilwell School Sixth Form, we provide new opportunities to broaden minds, to inspire and to motivate so that students can develop as leaders and valued members of the community.

In the school's recent OFSTED inspection, the Sixth Form scored a grade 2 or "Good" in every measure. They said "Outcomes for students in the sixth form continue to be strong. Best practice in teaching in key stages 3 and 4 is also evident in the 16–19 study programmes. As a result, students of all abilities are challenged and make good progress"

The Sixth Form has seen some excellent results in recent years. In 2018 96% of students achieved 3 A levels with 20% of students achieving AAB in facilitating subjects, 11% achieved an A\* which is significantly above national figures; many subjects achieved grades above the national pass rate; and 78% of our students went to University this year, 31% of those are now studying at a Russell Group University.

Teachers in the Sixth Form have high expectations of all students. We set aspirational targets, and the best is always expected. At the same time each student is viewed as unique and is provided with personalised opportunities and support to ensure success.

In our Sixth Form we endeavour to promote a sense of community. To this end, students are encouraged to engage with opportunities outside of their academic studies. These range from organising art events, fashion shows, charity events, and much more. We also assist all students with their efforts in securing meaningful careers experience placements.

Over the next two years we aim to provide you with an exciting and challenging experience which will develop you both as a learner and a young adult. Most importantly, we will prepare you to take your next successful step towards your chosen career.

**Mrs K Fyles – Head of Sixth Form**



# Support and Guidance

## Pastoral Support

In the Sixth Form the Pastoral System continues to support and guide students. Sixth Form Tutors come from a range of subject specialisms and have extensive experience of post 16 education. Each tutor group has approximately 15 students who meet regularly with their tutor.

Tutors will monitor your academic progress, offering advice and guidance when necessary. They will guide you through the process of applying for Higher Education courses, employment, or Gap Year activities. The work of the tutors is supported by the Head of Sixth Form who is based in the Sixth Form Building and is readily accessible to you. Regular communication with your parents or carers continues to be an important way in which we ensure that all students are happy, successful and achieve their full academic potential.

## Careers Guidance

You will have regular 1:1 interviews with both your tutor and Head of Sixth Form. This enables you to stay on track academically and prepare appropriately for your next step. Our individualised guidance begins in Year 11, when you will be interviewed by the Head of Sixth Form.

We provide robust independent careers advice to assist our students with their next steps; this ensures that you are able to make wise choices and make the most of all opportunities.

You will visit the Higher Education fair in Year 12 and this marks the beginning of the University application process. Within Chilwell School Sixth Form we are aware that not all students wish to go to university. To this end, we support individual students with any applications for apprenticeships and employment. To prepare you for your future career we hold a vocational day in the summer term. Here speakers are invited to talk about entry routes and progression within their profession. Throughout the year we invite local professionals to speak to all our students. You will also complete a week of careers experience, where you are encouraged to complete activities to enhance your applications for university and employment.

## Special Education Needs

Students identified as having additional learning needs continue to receive support in the Sixth Form. In class provision, language support and examination access arrangements are coordinated to ensure that all students are fully supported.

## Financial Support

Students can apply for additional financial support in the form of a Chilwell School Sixth Form Bursary. Each application is considered by the School Governors, based on individual circumstances. Awards are varied, and the maximum amount a student can currently claim stands at £1200 per academic year.



<b>Creative Technologies</b>		
Art		6
Photography		6
Textiles		7
<b>English</b>		
English Language		8
English Literature		8
Media Studies		9
<b>Humanities</b>		
Geography		10
History		10
Religious Studies		11
Psychology		12
Sociology		12
Health and Social Care		13
<b>Mathematics</b>		
Mathematics		14
Further Mathematics		14
Computing		15
<b>Modern Foreign Languages</b>		
French		16
Business Studies		17
<b>Performing Arts</b>		
Drama		18
Music		18
Physical Education		19
<b>Science</b>		
Biology		20
Chemistry		20
Physics		21
Applied Science		21
<b>Enrichment</b>		22
<b>EPQ</b>		22
<b>Admissions</b>		22

# Art

Fine Art offers opportunities to use your creativity to express yourself. You will develop your understanding of creative processes, your ability to observe and to think, to solve problems and to communicate in a visual way. It will enable you to work independently and to make your own discoveries by exploring ideas, other artists' work and different materials and techniques. Fine Art gives you the skills and knowledge to create personal and imaginative work. If you have an adventurous, creative and enquiring mind, and are excited by both traditional Art and post-modern movements, then this is the course for you.

## Assessment

Component 1 – Personal Investigation

Component 2 – Externally Set Assignment

## Exam Board: AQA

Additional entry requirements: Students will need a minimum grade 4 GCSE Art.

# Photography

A Level Photography is an alternative to Fine Art by way of using photography to express your creative ideas. You will study photography locally and nationally with visits to galleries and research on the internet. The focus is on creativity but you will also learn a lot of technical information about how to use cameras effectively. You will get the chance to use an SLR camera, although you can use other digital cameras to produce your work. You will experiment with a range of different photographic paper to achieve different photographic results. You will experiment greatly with Adobe Photoshop in order to understand how to manipulate or enhance your photographic creations.

## AS Assessment

Unit 1 – Coursework

Unit 2 – Externally Set Assignment,

## A2 Assessment

Unit 3 – Personal Investigation.

Unit 4 – Externally Set Assignment,

## Exam Board: AQA

Additional entry requirements: Students will need a minimum grade 4 GCSE Art if taken or portfolio.

# Textiles

In Textiles a variety of fabrics, media and artistic techniques are utilised. You will explore images, artefacts and resources relating to a range of arts, crafts and designs from the past, present and future. This forms an integral part of the investigative and creative process. Your skills will be assessed through practical and critical activities which should reflect your understanding of different styles, genres and traditions. You will be expected to work in one or more areas; constructed and installed textiles, printed and/or dyed fabric and materials, domestic textiles and interior design / fashion.

## Assessment

The course is assessed by both examination and coursework. You will be required to demonstrate:

- an awareness of the elements of textile design such as shape, colour, texture, pattern, harmony, contrast and repetition
- an appreciation of the relationship of form and function and, where applicable, the constraints of working to a brief
- an understanding of a variety of textile methods, such as fabric printing, tie-dye, batik, spraying, transfer and fabric construction and stitching

## Exam Board: AQA

Additional entry requirements: Students will need a minimum grade 4 GCSE Art or Textiles.





## English Language

English Language is designed for those who wish to take their English studies further. If you love words and would like to know more about the development and variety of our language then this is the course for you. You will study how children acquire language skills and look at how language functions in our society. There is also a sustained focus on understanding the diversity of our language use and how language changes over time through the analysis of both spoken and written texts. Coursework will enable you to undertake an investigative study of language in action and allows you the flexibility to focus on an area of language use that you would like to explore further.

### **A Level Assessment:**

Paper 1: Language, The Individual and Society  
Section A – Text Variation and Representation  
Section B – Child Language Development

Paper 2: Language Diversity and Change  
Section A – Diversity and Change  
Section B – Language Discourses

Non-exam assessment: Language in Action  
Language Investigation – 2000 words  
Original Writing – 1500 words

### **Exam Board: AQA**

Additional entry requirements: Students will need a minimum Grade 4 GCSE English Language.

## English Literature

Why do writers write? Not just to entertain or make a living. Great writers write because they are fascinated by people and life and want to communicate their ideas about the world – their work touches us precisely because we can recognise what they are saying.

Studying English Literature is therefore for anybody interested in how and why people live their lives the way they do: it involves thinking about life and death, love and relationships, good and evil. It is a subject that *demand*s a personal response.

### **Key Topic Areas**

The Gothic; American Drama post-1900; Tragedy; Elizabethan and Jacobean Revenge Tragedy; Pre-Raphaelite Poetry; Post-war landscapes; women in Literature.

### **Assessment**

Component 1 (Exam -40%): Shakespeare and Drama & Poetry  
Component 2 (Exam - 40%): Comparative and Contextual Study  
Component 3 (Coursework - 20%): Literature Post-1900

### **Exam Board: OCR**

Additional entry requirements: Students will need a minimum grade 4 GCSE English Literature.



# Media Studies

It is impossible to ignore the media! Our course offers you the chance to investigate the ways in which it influences all our lives.

Explore how media products are used by institutions to construct different representations and how media audiences interpret these products. Research and analyse the ideas and arguments from debates about the media drawing from a historical perspective, the digital age and global media.

You will also have the opportunity to **practically** explore the creation of three linked media products in a cross-media production – the perfect combination of theoretical and hands-on knowledge!

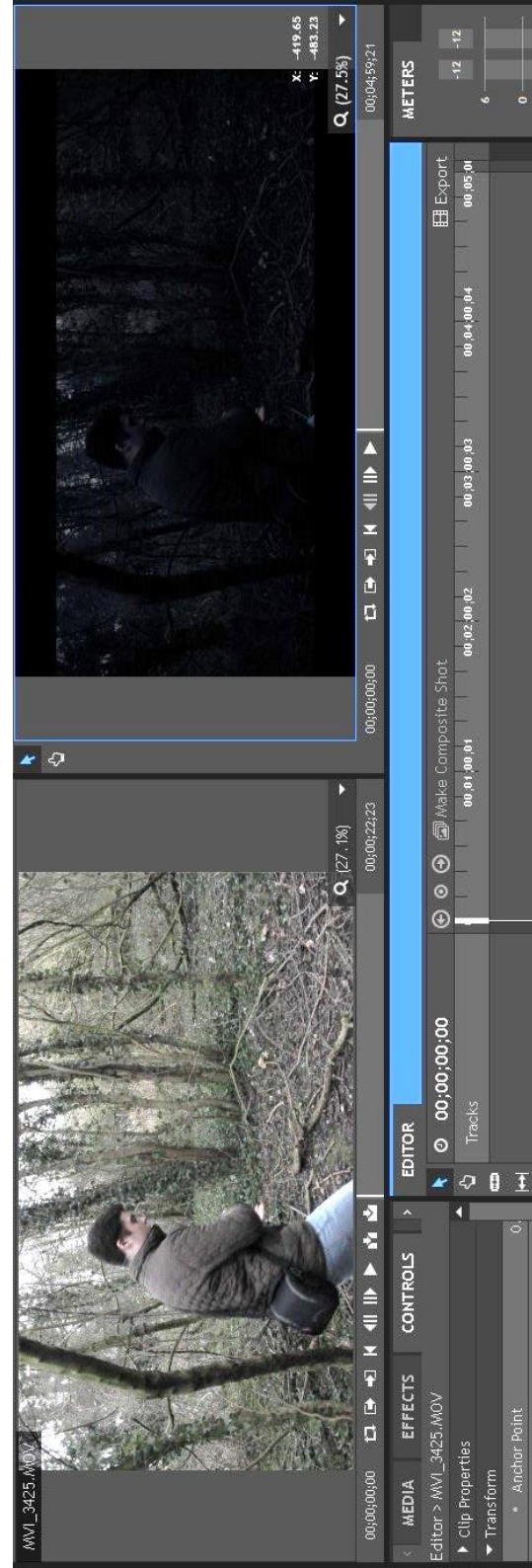
## Assessment

Component 1– Examination (70%)

Component 2 – Coursework (30%)

## Exam Board: OCR

Additional entry requirements: Students will need a minimum Grade 4 GCSE English Language or Literature.



## Geography

Geography will expand your horizons and enable you to develop an understanding of global problems and environmental responsibilities. You will study themes such as hazards, climate change, population issues and globalisation. Fieldwork and research are important components of the geography course, so independent enquiry skills are vital. Four days of fieldwork are compulsory and we plan to balance them between physical and human units of study.

If you have a lively and enquiring mind, an interest in the environment and current affairs, a willingness to explore new ideas coupled with the ability to communicate ideas and views effectively, Geography is the course for you.

### Assessment

Unit 1 Dynamic Landscapes- tectonics, coasts, landscapes

Unit 2 Dynamic Places – globalisation, regenerating places, shaping places

Unit 3 Synoptic Themes – players, attitudes, futures

Unit 4 Coursework: Independent Investigation – physical and human issues investigated

### Exam Board: Edexcel

Additional entry requirements: Students will need a minimum Grade 5 GCSE Geography or Grade 4 in English Language.

## History

Employers and universities know that with a GCE qualification in History, you have the skills they desire. This course will develop your ability to empathise, as we explore the context and consequences of key historical events. It will prompt you to be able to make reasoned judgements based upon historical evidence. You will study the birth of the USSR; how in 7 years they went from having an emperor to being a dictatorship. You will also gain insight into how the world today was shaped by events last century. Finally, you will discover how Britain changed during the Tudor and Stuart periods and find out how it changed Britain forever. In particular, you will study the reasons behind religious change during this time period and evaluate the impact of such change on people at the time.

### Assessment

Unit 1 - Historical Themes in Breadth - Russia 1855-1964

Unit 2 - British Depth Study –Religious Conflict and the Church in England 1529-1570

Unit 3 - Historical enquiry, Coursework

### Exam board: AQA

Additional entry requirements: Students will need a minimum Grade 5 in GCSE History (if taken) and Grade 4 GCSE English Literature.

# Religious Studies

Our beliefs and values are formed by many things. They, in return, affect how we live our lives. Religious Studies will help you discover the background to how ethical opinions were developed, as we investigate the great Philosophers and their ideas. These theories can then be applied to real life issues. For example, Plato's ideas of reality will be compared to those of Aristotle. We also study the origins of the universe and life, as we compare evolutionary beliefs versus that of creationism.

## Assessment

There are three equally weighted exam papers each 2 hours in length.

Paper 1 – Philosophy

Paper 2 – Ethics

Paper 3 – Development in Religious Thought

## Exam Board: OCR

Additional entry requirements: Students will need a minimum Grade 4 GCSE Religious Studies.



## Sociology

Sociology is the study of human social behaviour and factors which influence an individual's life. You will gain insight into how people organise themselves into groups and are able to control the behaviour of their members. You will study key themes such as culture and identity, power, social class, gender and ethnicity, and consider how these areas affect an individual or group's life chances. You will also develop in depth knowledge and understanding of the major sociological theories and the specific research models employed by sociologists.

### Assessment

Paper 1 – Education with Theory and Methods

Paper 2 – Topics – Family and Beliefs

Paper 3 – Crime and Deviance with Theory and Methods

**Exam board: AQA**

Additional entry requirements: Students will need a minimum Grade 4 GCSE English Literature

## Psychology

Whatever career you pursue, a background in Psychology will enhance your employability. Studying Psychology can help you understand yourself and other people by learning about aspects of human behaviour. This will help you understand your interactions with others, your learning and memory performance, your ability to cope with pressure and your understanding of the causes of psychological disorders.

This qualification offers an exciting introduction to Psychology. It is not necessary to have studied Psychology before. The A Level course builds on skills developed in the sciences and humanities, enabling progression into a wide range of other subjects.

### Assessment

The specification includes the following topics: Social Influence; Memory; Attachment; Psychopathology; Biopsychology; Issues and Debates in Psychology; Gender; Schizophrenia and Aggression.

These will be assessed via 3, 2 hour exams. Which include: multiple choice, short answer and extended writing questions.

**Exam board: AQA**

Additional entry requirements: Students will need a minimum Grade 4 in Biology or Double Award Science 44 and minimum Grade 4 GCSE English Language.



# Health and Social Care

Health and Social Care will provide you with transferrable skills that are highly valued within a range of vocational settings. For example, psychiatric nursing, midwifery, social work and the police force are all professions that require social understanding. This qualification will also give you an awareness of contemporary issues within health and social care. It is not necessary to have studied health and social care before, and this qualification compliments other A levels.

## The specification includes the following topics:

- Service Provision
- Values
- Rights
- Responsibilities
- Care Settings
- Communication
- Health and Well-being
- Understanding Human Behaviour
- Practitioner Roles.

## Assessment

The qualification is unit based and will be assessed through portfolio building and written examination.

## Examination board: OCR

Additional entry requirements: Students will need a minimum grade 4 GCSE English language



# Mathematics

Mathematics provides a secure foundation for many careers. Many popular professional careers such as Accountancy, Banking, Surveying, Engineering and Computing require an A level in Mathematics. This subject will also train your mind to develop logical thinking and problem-solving skills that are necessary within all higher education or vocational settings.

The Mathematics course consists of compulsory contents of pure and applied topics. The pure content will extend your knowledge and understanding of the basic tools of mathematics such as algebra, geometry and calculus. The applied contents will give you the opportunity to use your mathematical skills in a range of 'real' contextual settings as we study statistics and mechanics mathematics.

The Further Mathematics course consists of a compulsory pure content and a combination of any two of the applied contents of mechanics, statistics and discrete mathematics.

## Mathematics

### Assessment

Pure  
Statistics  
Mechanics

### Exam board: AQA

Additional entry requirements: Students will need a minimum Grade 5 at Higher GCSE Mathematics.

## Further Mathematics

### Assessment

Pure  
Any two of Statistics, Mechanics or Discrete

### Exam board: AQA

Additional entry requirements: Students will need a minimum Grade 5 at Higher GCSE Mathematics.

# Computer Science

This course will prepare you for any higher education course or employment opportunity where technology plays a pivotal role. The A level course allows you to practically demonstrate and apply your knowledge of the fundamental principles of computer science. Through the course you will develop problem solving skills, using an algorithmic approach. Equally, you will learn how to apply a range of problematic computer science scenarios. You will also gain detailed understanding of both the hardware and software aspects of Computer Science.

## Assessment

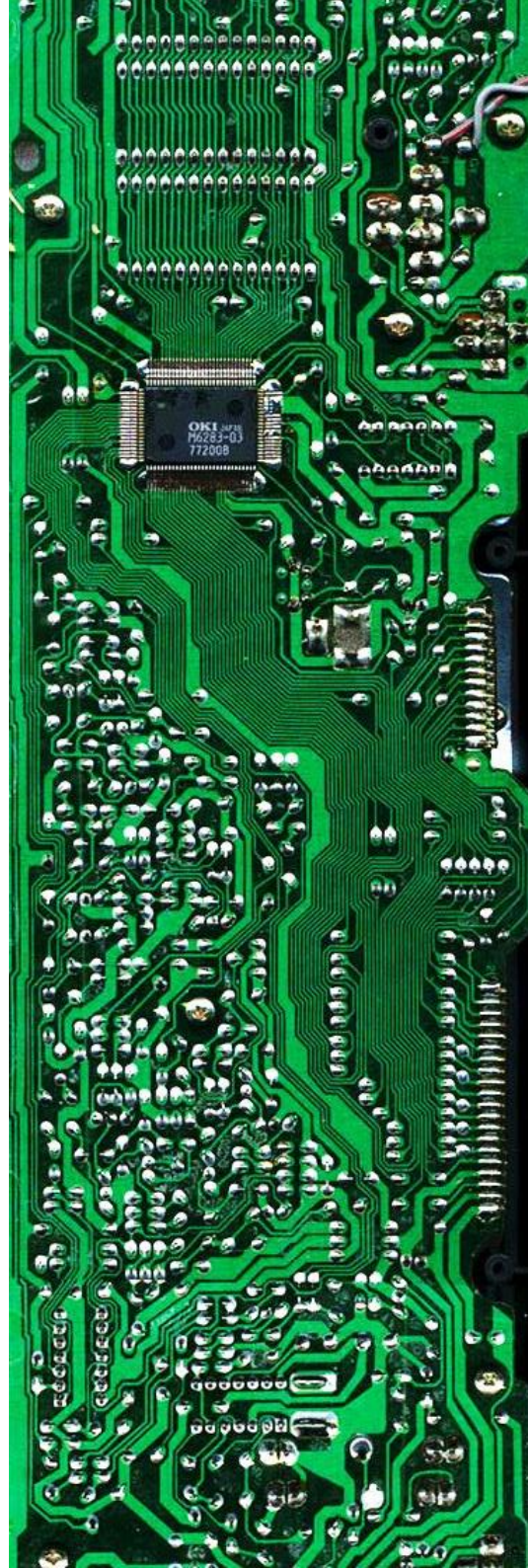
Paper 1 - Fundamentals of programming , data structures and algorithms . Theory of computation

Paper 2 - Fundamentals of data representation, computer systems, computer organisation and architecture, communication and networking. Consequences of uses of computing. Fundamentals of databases, functional programming and Big Data.

Non-exam assessment - Systematic approach to problem solving

## Exam Board: AQA

Additional entry requirements: Students will need GCSE Computing at grade 5 or a minimum Grade 5 GCSE Mathematics or GCSE Physics.





# Languages

Fluency in a foreign language is a real asset that relatively few people possess, so get ahead of the crowd and learn a skill that will enable you to take your place on the European stage. At Chilwell School Sixth Form we have up-to-date resources that will turn you into a confident user of modern languages. If GCSE taught you how to survive as a tourist, then A Level will enable you to work with confidence using your languages in a professional and social context.

## French

French is one of Europe's most important languages; indeed it is one of the official languages of the European Union. If you are looking for an international dimension to your future career then French could be for you.

### Assessment

Paper 1 : Listening, reading and translation

Paper 2 : Written response to works and translation

Paper 3 : Speaking

### Exam Board : Edexcel

Additional entry requirements: Students will need a minimum Grade 5 GCSE French





# Business Studies

During the course you will study business in a variety of contexts (e.g. large/small, UK focused/global, service/manufacturing).

You will consider:

- What is business?
- Managers, leadership and decision making
- Improving marketing performance
- Financial decision making
- Human resource
- Analysing the strategic position of a business
- Choosing strategic direction
- Managing strategic change

An important feature of the course is putting theory into practice. To support this approach, you will visit several businesses.

## Assessment

There are three equally weighted exam papers each covering the whole syllabus. Each paper is 2 hours long.

Paper 1 – Multiple choice, short answer and essay questions.

Paper 2 – Data response questions

Paper 3 – Business case study

## Exam Board: AQA

Entry requirements: Mathematics and English GCSE grade 4 and above.



## Drama

In order to enable you to appreciate and experience a wide range of dramatic performance styles we have built a fresh and exciting course, which balances practical performance, theatre history and the theoretical study of Drama. We are able to offer small group sizes and a variety of working spaces, including our 180 seat theatre. The focus is very much on the process of creating drama, and you will be fully supported as you prepare to take your early scripting to public performance. We run regular theatre trips, as an essential element of the course to allow you to experience live theatre; you can expect to see a variety of productions throughout your time on the course.

### Assessment

Component 1 – Drama and Theatre

The study of two set plays through practical work. Written exam.(40%)

Component 2 – Creating Original Drama.

Creation and performance of devised performance. Accompanied by working notebook. (30%)

Component 3 – Making Theatre.

Exploration and performance of three extracts from a play. Reflective report. (40%)

### Exam Board: AQA

Additional entry requirements: Students will need a minimum Grade 4 GCSE Drama or interview.

## Music

In this course you will develop your skills in performance, composing, writing four part harmony and listening and appraising. You will study music from a wide range of genres including the western classical tradition, film, fusion, popular music and jazz. In order to be accepted on this A Level course you will need to have already demonstrated that you have the capacity to either play an instrument or have performed vocally. It is crucial that you have skills in both reading and writing music in both treble and bass clef. Expected performance standard for entry level, as set by the examination board, is Grade 6. The syllabus being taught is the two year A2 course, although there will be strands studied at AS level that will naturally lead on to further A2 study in performing, composing, listening and analysis of set musical works.

### Assessment

Component 1 – Performing (30%)

Component 2 – Composing (30%)

Component 3 – Appraising (40%)

### Exam Board: Edexcel

Additional entry requirements: Students will need a minimum of Grade 5 at GCSE Music. To be successful at this level, students must be confident performers and composers and must have a background in reading music. Grade 5 theory standard would be highly beneficial.

# Physical Education

The course is designed to help you progress smoothly from previous PE learning at GCSE.

You will study:

- Applied Exercise Physiology
- Skill Acquisition
- Applied Physiology to Optimise Performance
- Psychological Aspects that Optimise Performance
- Evaluating Contemporary Influences

## Assessment

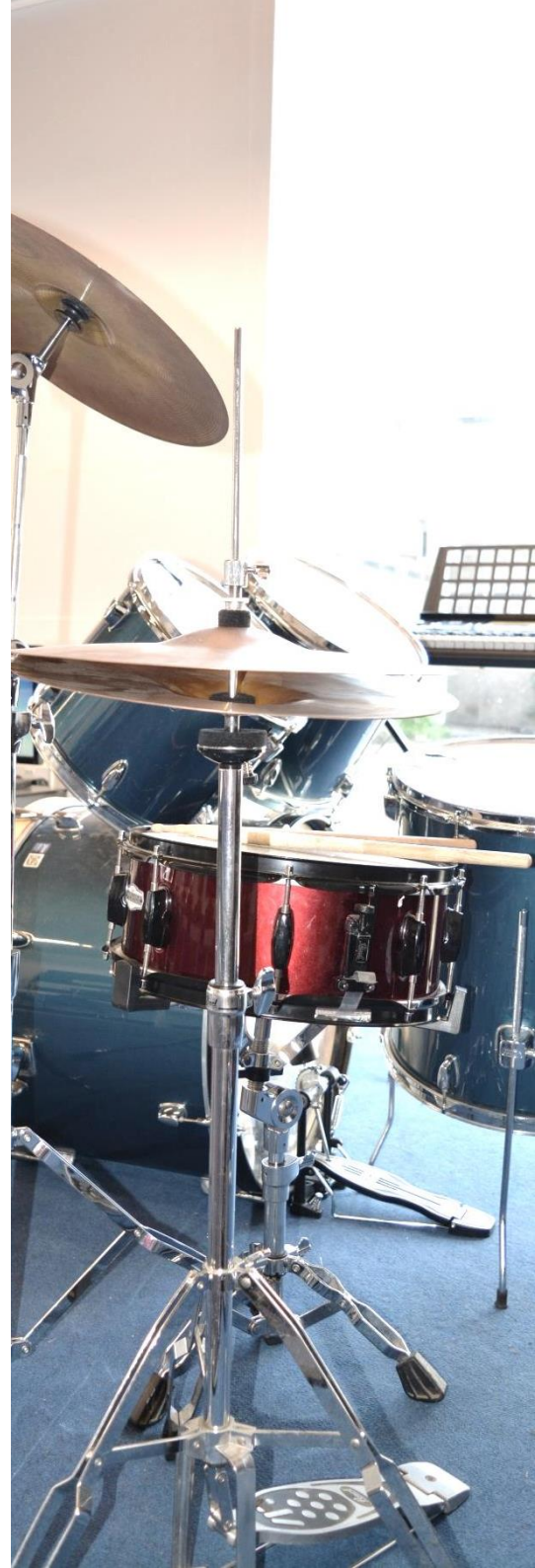
Paper 1 - Factors affecting participation in physical activity and sport. (Exam – 35%)

Paper 2 - Factors affecting optimal performance physical activity and sport. (Exam – 35%)

Practical Element – Practical performance in physical activity and sport (30%)

## Exam board: AQA

Additional entry requirements: Students will need a minimum Grade 5 GCSE P.E and play at least one sport competitively.



## Biology

Biology is one of the most popular A Level subject in the country, attracting students studying a wide range of other subjects. Many of these students enjoy the subject so much that they eventually choose a biologically related degree course. Others go on to careers in law, computing, accounting or teaching. The topics you will learn include Biological Molecules, The Exchange of Substances by Organisms, Genetic Information, Variation and Relationships, The Response of Organisms to Changes in the Environment, Genetics and the Control of Gene Expression.

Biology is a great choice of subject for people who want a career in health and clinical professions, such as medicine, dentistry, veterinary science, physiotherapy, pharmacy, optometry, nursing, zoology, or forensics.

### Assessment

Three 2 hour papers on the previous two year's work.

### Exam Board: AQA

Additional entry requirements: Students will need a minimum of 2 5s in Science at GCSE including Biology and minimum Grade 5 GCSE Mathematics

## Chemistry

Students with a wide range of interests enjoy the Chemistry course. Whether you want a job in medicine or industry, chemistry is the solid platform upon which careers are built. The topics you will learn in Physical Chemistry will include thermodynamics, rate equations and acids and bases. In Organic Chemistry - aldehydes and ketones, amines and polymers. Within Inorganic Chemistry - the properties of the period 3 elements and their oxides and transition metals.

Chemistry is a great choice of subject if you would like to pursue a career in health and clinical professions, such as medicine, nursing, biochemistry, dentistry or forensic science. It will also equip you for a career in industry, for example in the petrochemical or pharmaceutical industries.

### Assessment

Three 2 hour papers on the previous two year's work

### Exam Board: AQA

Additional entry requirements: Students will need a minimum of 2 5s in Science at GCSE including Chemistry and minimum Grade 5 GCSE Mathematics.



## Physics

Our Physics students are interested in learning about how the universe works, everyday phenomena and technology. Whether you want a job in medicine or industry, Physics is the solid platform upon which careers are built. The topics you will learn include: Further Mechanics and Thermal Physics, fields and their consequences, Nuclear Physics, Astrophysics, Medical Physics, Engineering Physics, Turning Points in Physics and Electronics.

Universities and many employers appreciate the value of Physics and the subject is useful for progression to study a wide range of subjects at a higher level such as Medicine, Engineering, Computing and Music Technology.

### Assessment

Three 2 hour papers on the previous two year's work

### Exam Board: AQA

Additional entry requirements: Students will need a minimum of 2 5s in Science at GCSE including Physics and minimum Grade 5 GCSE Mathematics.

## Applied Science

The AQA Level 3 Extended Certificate in Applied Science has been developed with a wide range of higher education institutions to ensure that the best possible progression opportunities are available to courses at Foundation and/or BSc degree level including biomedical, forensic and sports science, as well as nursing. The qualification is eligible for UCAS points.

Topics will include:

- scientific principles associated with biology, chemistry and physics
- experimental and practical techniques associated with applied science
- the roles and skills of scientists, and the public and media perception of science
- how the human body works
- scientific investigations.

### Assessment

Assessment is 50% external examination and 50% coursework assignment.

### Exam Board: AQA

Additional entry requirements: Students will need a minimum of 2 Grade 4s in Science at GCSE.

# Enrichment

In an increasingly competitive market for university places and job opportunities, enrichment becomes a vital discriminator as admissions tutors and employers increasingly select applicants based on not only their academic achievements, but also their broader social skills and experiences.

All students participate in a range of extra curricular activities as part of their timetabled studies. These include:

- Duke of Edinburgh Award Scheme
- Charity Committee
- Community Sports Leader Award
- Music Group
- Inspired Volunteers
- Sixth Form Debate Team
- Mentors
- Student Ambassadors
- Sports and fitness

# EPQ

The Extended Project Qualification is an independent piece of work, some instruction is provided but most of the project is self guided. This will help you demonstrate to universities and employers that you are able to work autonomously. The focus of each project is chosen by individual students to reflect their skills and interests. EPQ is assessed through the submission of a written report and has the same UCAS tariff as an AS.

# Entry Requirements

## General entry requirements

Students must have achieved a minimum of 5 GCSEs at grade 4 or above, including Maths and English at grade 4.

## Additional entry requirements

Some subjects have additional entry requirements which are specified in the course guide.

# Applications

We welcome applications from pupils at Chilwell School and other schools. There are several ways in which you can apply for a place at Chilwell School Sixth Form:

- Online at [www.chilwellschool.co.uk](http://www.chilwellschool.co.uk)  
Download our application form.
- Complete the enclosed application form and post to:

Chilwell School  
Queens Road West  
Chilwell  
Nottingham  
NG9 5AL

# Interviews

All applicants will be called for interview and parents/carers are welcome to attend these interviews. Our interviewing process begins in October.

# FAQ's

## **How many A-Levels will I study?**

Most of our students take three A levels. Those students with a high average point score from GCSE will be encouraged to complete a EPQ (Extended Project Qualification – Level 3) or possibly a fourth A-Level. Universities, including Oxford, Cambridge and the Russell Group, base their offers on three good A-Levels.

## **How do I decide what is best for me?**

Deciding upon A level courses can be a challenging process which needs careful consideration. It is important to try and balance subjects that you enjoy and want to pursue further beyond A levels with subjects that, academically, you can achieve in. It is important that you consider carefully your career aspirations as most degree courses and apprenticeships require qualifications in specific subjects. You will need to discuss this with us during your enrolment onto courses and we will support you in your final decision.

## **Will I need to attend an interview?**

We interview all applicants to Chilwell School Sixth Form. Most interviews take place early on in the academic year. This provides an opportunity for us to find out a little bit about you and discuss your academic progress and GCSE expected grades. It also gives you an opportunity to ask about courses and life as a sixth form student. We also welcome parents if they would like to attend the interview with you.

## **Can I change a course once I have selected it?**

Ideally we would like to ensure you select the right courses from the onset and we are always available to offer advice to new post 16 students. However, occasionally students do change their minds about courses or career plans over the summer holidays. Equally, a few students start a course only to discover it is not suiting them. We would only recommend a course change within the first four weeks of term as, after this point, there is a considerable amount of work you would have missed from the course you are intending to move onto.

## **What happens if I don't get the grades I need?**

If this happens then don't despair – we are here to discuss your options. There are a range of opportunities available to you in Nottinghamshire. As mentioned earlier, if you just narrowly miss your 4 grade in English or Mathematics it may be possible to resit these subjects. If you do not get a minimum of 5 grade 4 GCSE passes, then we can look into other providers who offer a range of vocational courses.

**In pursuit of excellence**



Chilwell School 6<sup>th</sup> Form, Chilwell School  
Queens Road West, Chilwell, Beeston, Nottingham, NG9 5AL  
Telephone: 0115 925 2698 Fax : 0115 925 8167  
Email: [office@chilwellschool.co.uk](mailto:office@chilwellschool.co.uk).  
[www.chilwellschool.co.uk](http://www.chilwellschool.co.uk)